



KAMAT  
*Gardens*  
ALTINHO, MAPUSA-GOA







## Kamat Gardens. Welcome to your new address.

Kamat Gardens. Perched atop a green hillock in the northern town of Mapusa. Conveniently located near the bustling township, yet away from the hustle bustle of the area, Kamat Gardens offers two, three and four bedroom apartments with beautiful views of the town and green valleys.



### Goa, the place you can call 'home.'

Goa brings to mind images of natural beauty, beautiful beaches, green fields, winding roads along the villages and the splendor of Goan-Portuguese influenced architecture. The beautiful state on the west coast of India is dream destination for every Indian. Kamat Gardens is an opportunity to own a home in beautiful Goa.







## Kamat Construction. A name you can trust.

A reputed name in the real estate industry, projects by Kamat Construction are unmatched in terms of quality and style. An established brand which has earned the respect and trust of the people since the start of its existence. Kamat Construction is known for its sturdy constructions, smart architecture, well designed apartments and attention to detail.

## Designed for your family's needs.

Kamat Gardens offers apartments that cater to the needs of today's buyer. Be it a small nuclear family or a traditional large one, Kamat Construction has accounted for every need and requirement. Large airy rooms, well designed living spaces, study areas for children and balconies that overlook the town.



## Bringing nature into your homes.

Build on a hill, apartments at Kamat Gardens offer serene views of the green valleys and fields during the day and the twinkling lights of the busy town of Mapusa during the night. Its strategic location ensures that an abundance of natural light and breeze make its way into the apartments all through the year.



## The perfect setting for a positive state of mind.

Kamat Gardens is designed for your personal needs. Pathways and lawns for the elderly, a swimming pool and club house, play area for children are designed within the complex area. Step into Kamat Gardens and pick the home ideal for your family. Kamat Gardens offers its residents total peace of mind and healthy lifestyle.



TYPICAL FLOOR PLAN  
BUILDING 20

F2	-	308.00 m <sup>2</sup>
S2	-	308.00 m <sup>2</sup>
T2	-	308.00 m <sup>2</sup>
FR2	-	308.00 m <sup>2</sup>

F1	-	212.00 m <sup>2</sup>
S1	-	212.00 m <sup>2</sup>
T1	-	212.00 m <sup>2</sup>
FR1	-	212.00 m <sup>2</sup>





TYPICAL LOWER & UPPER  
GROUND FLOOR PLAN  
BUILDING 29

LG2 - 162.00 m<sup>2</sup>  
UG2 - 162.00 m<sup>2</sup>

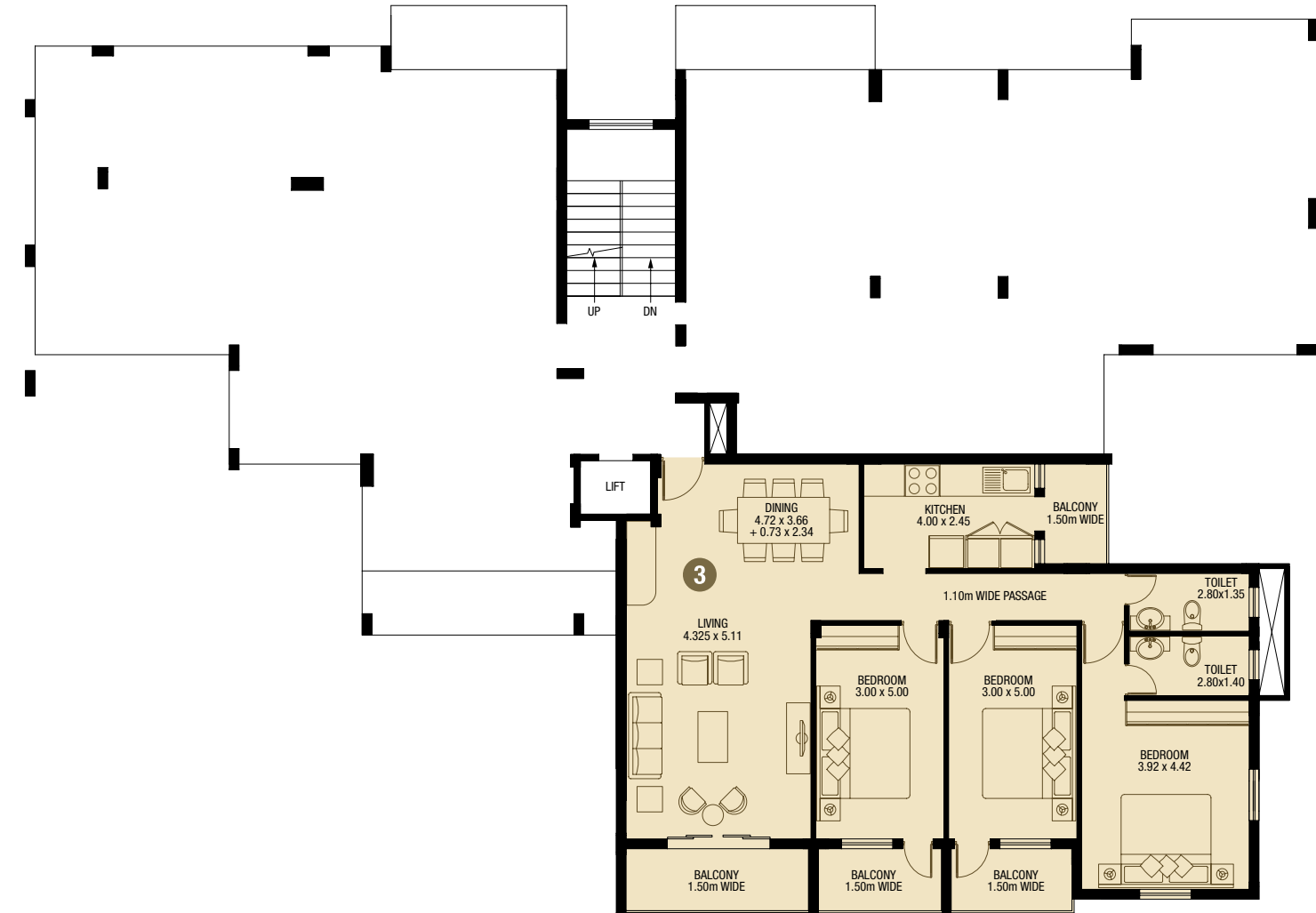
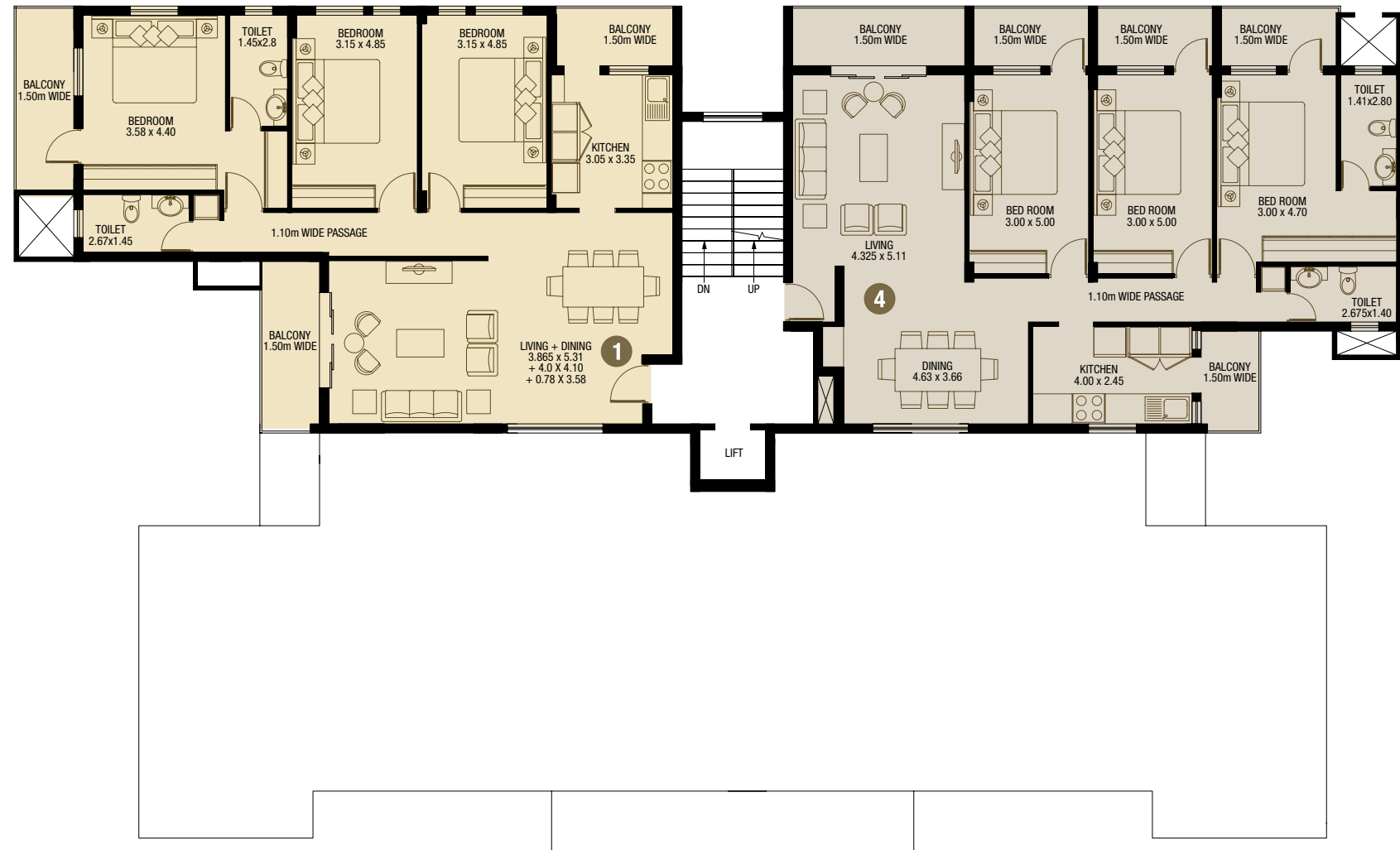
LG3 - 155.00 m<sup>2</sup>  
UG3 - 155.00 m<sup>2</sup>



TYPICAL FIRST & SECOND  
FLOOR PLAN  
BUILDING 29

F1 - 154.00 m<sup>2</sup>  
S1 - 154.00 m<sup>2</sup>  
F2 - 162.00 m<sup>2</sup>  
S2 - 162.00 m<sup>2</sup>

F3 - 155.00 m<sup>2</sup>  
S3 - 155.00 m<sup>2</sup>  
F4 - 157.00 m<sup>2</sup>  
S4 - 157.00 m<sup>2</sup>



TYPICAL THIRD & FOURTH  
FLOOR PLAN  
BUILDING 29

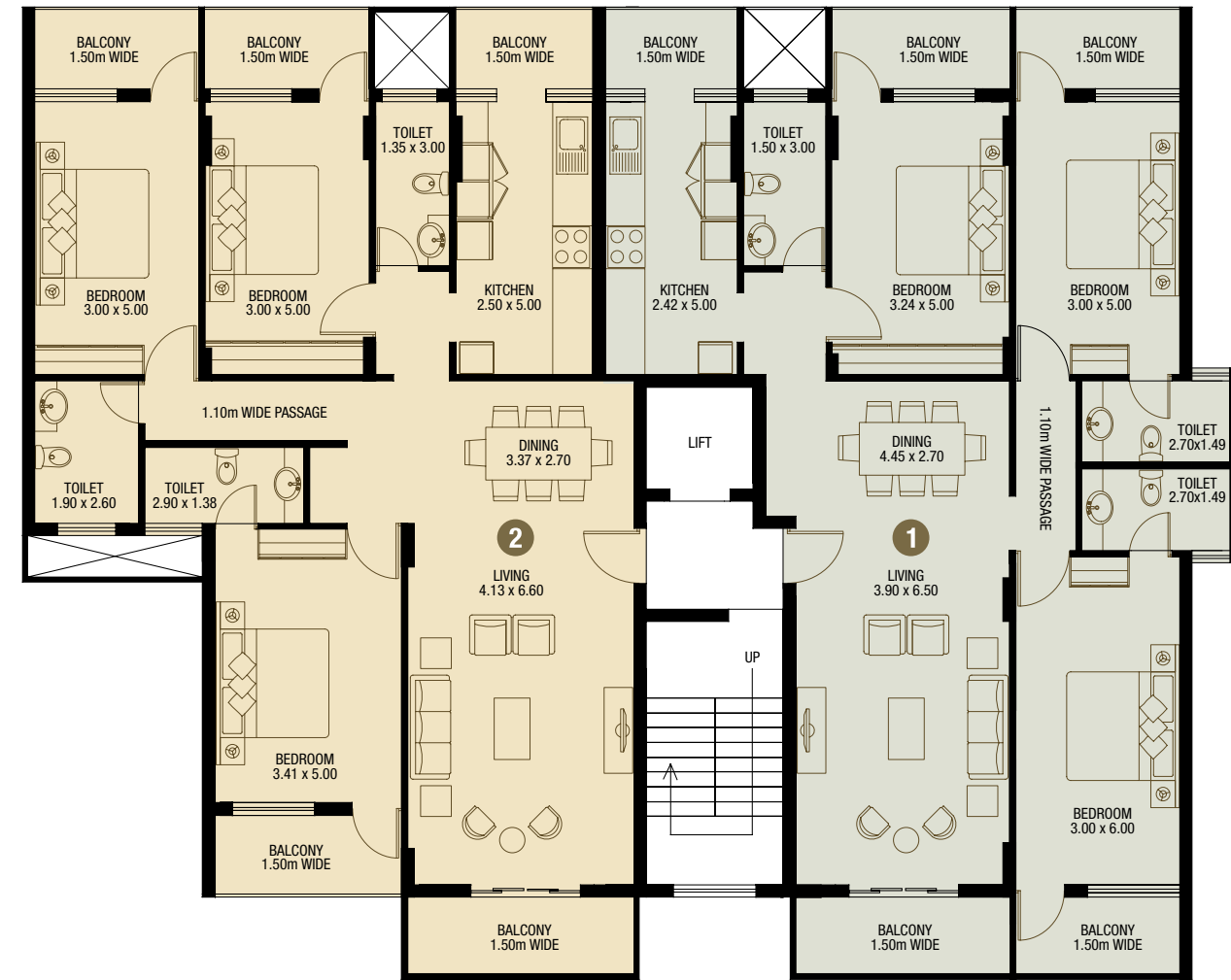
T1 - 154.00 m<sup>2</sup>  
FR1 - 154.00 m<sup>2</sup>

T4 - 157.00 m<sup>2</sup>  
FR4 - 157.00 m<sup>2</sup>



TYPICAL LOWER & UPPER  
GROUND FLOOR PLAN  
BUILDING 30

LG3 - 156.00 m<sup>2</sup>  
UG3 - 156.00 m<sup>2</sup>



TYPICAL FIRST & SECOND  
FLOOR PLAN  
BUILDING 30

F1 - 157.00 m<sup>2</sup>  
S1 - 157.00 m<sup>2</sup>  
F2 - 155.00 m<sup>2</sup>  
S2 - 155.00 m<sup>2</sup>

F3 - 156.00 m<sup>2</sup>  
S3 - 156.00 m<sup>2</sup>



TYPICAL FIRST, SECOND,  
THIRD & FOURTH FLOOR PLAN  
BUILDING 32

F2 - 173.50 m<sup>2</sup>  
S2 - 173.50 m<sup>2</sup>  
T2 - 173.50 m<sup>2</sup>  
FR2 - 173.50 m<sup>2</sup>

F1 - 169.50 m<sup>2</sup>  
S1 - 169.50 m<sup>2</sup>  
T1 - 169.50 m<sup>2</sup>  
FR1 - 169.50 m<sup>2</sup>





## SPECIFICATION

**The Structure:** It is a R.C.C. framed structure of columns, beams and slabs. The internal partition walls will be of 4½" brick masonry and the external walls will be 9" brick/laterite masonry.

**Plaster:** External plaster will be double coat sand faced cement plaster. Internal plaster will be single coat with second coat of neeru.

**Flooring:** The flooring will be of Vitrified tiles. Toilet dado and floor will have Ceramic tiles.

**Doors:** All the doors will have teakwood frames. Main door will be provided with teak wood shutters and Bedroom doors with 35mm thick flush doors with both sides teak veneer. External doors will be of teak wood. The doors will have M.S. hinges and Aluminium/Brass fittings.

**Windows:** Windows will be of sliding upvc (Fenesta make) or equivalent.

**Kitchen:** The Kitchen will have a cooking platform with black granite top and 45 cms. tiles lining above the platform. Stainless steel sink with single bowl will be provided.

**Internal Decor:** The walls will be painted with oil bound distemper and ceiling with white wash. Doors will be painted/varnished/French polished.

**External Decor:** External walls will be painted with cement paint.

**Plumbing & Sanitary:** Soil, waste and water pipes will be partially concealed. One white glazed European W.C. unit with flushing system, one shower and one wash basin will be provided in each toilet. Sanitaryware make will be of Hindware/Somany or equivalent. Fittings of Jaquar or equivalent quality will be provided.

**Electrical Installations:** The electrical wiring will be concealed with Finolex cables or equivalent. All switches will be of SSK make or equivalent.

**AMENITIES** ■ Elevators ■ Generator for Lift and common Lighting ■ Swimming Pool ■ Stilted Car Parking ■ Club House ■ Gymnasium ■ CCTV camera at the entrance.



 **KAMAT**  
REAL ESTATE DEVELOPERS

**Regd. Office:** F/1, Indira Apartments,  
Caetano Albuquerque Road, Panaji-Goa 403 001 INDIA.  
Phone: **+91-832-2229272, 2227089.**  
Fax: **+91-832-2224090.**  
E-mail: **kcpl@satyam.net.in**